

INSTRUCTION MANUAL

ADAM™

ACCESSORY KIT

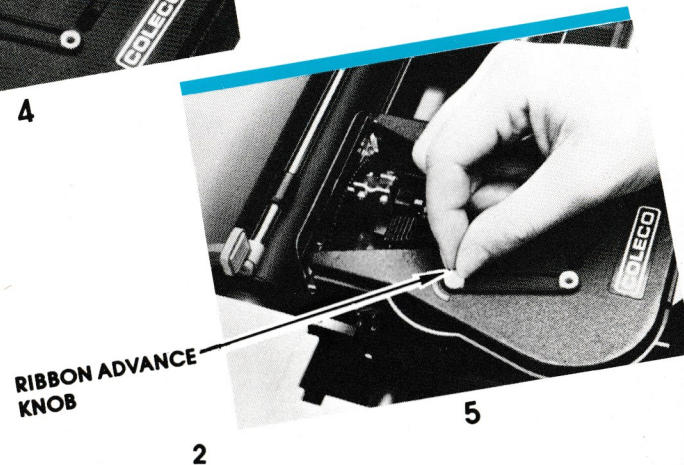
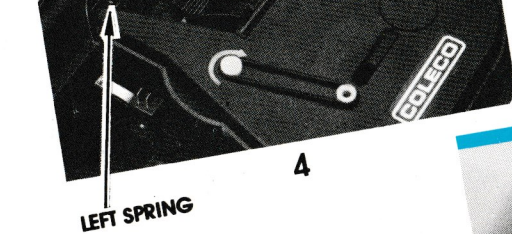
For ADAM™, the ColecoVision® Family
Computer System

- **Replacement Ribbon Cartridge**
Multi-strike carbon film ribbon for high-quality impression, maximum ribbon "life."
- **3 Daisy Wheels**
Emphasis—A large, bold type style.
Pica 10—The most popular typeface for home electric typewriters.
Courier 72—A professional typeface, used with many business typewriters.
- **Blank Digital Data Pack**
Stores approximately 250,000 bytes (characters) of data or program.
High-density: Engineered for high-speed data transfer.
- **Digital Data Drive Cleaner Kit**
Bottle of cleaning fluid and foam-tip applicators.

Ribbon Cartridge

Changing the Ribbon

- 1 Remove the printer cover. Slide the printing mechanism to the center of the roller.
- 2 To release the ribbon, press down on the notched latch firmly.
- 3 Pull the ribbon cartridge up and out from the tray it rests in.
- 4 Snap the new ribbon cartridge into the ribbon tray. Then make sure the ribbon feeds around the right spring, between the daisy wheel and roller, and around the left spring.
- 5 Turn the ribbon advance clockwise until the slack is taken up. Replace the printer cover.



2

5

3

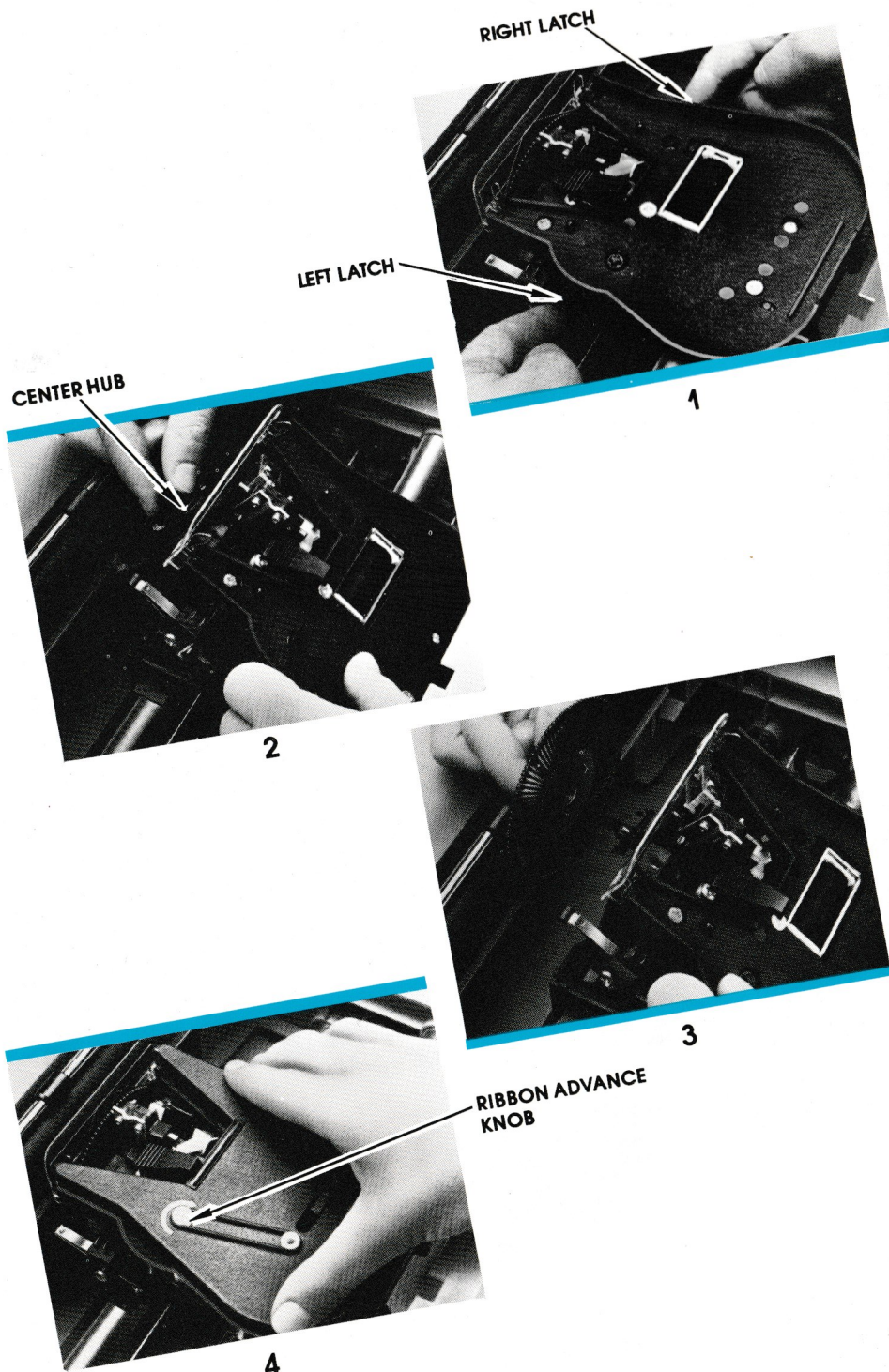
Daisy Wheels

Changing the Daisy Wheel

WARNING: Before you start, the power plug must be disconnected!

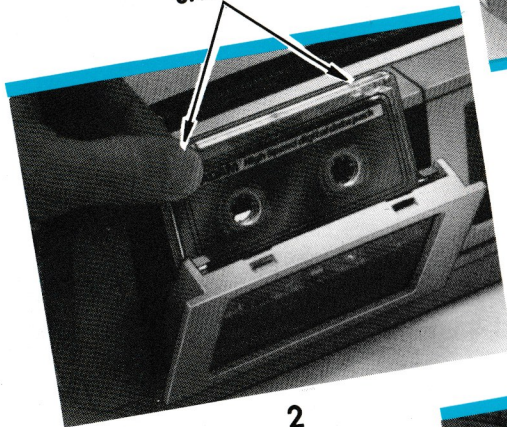
NOTE: The printwheel is a precision part designed to operate at high speed within precise tolerance. The printwheel should be handled only by the center hub. The spokes should never be handled, touched, bent, twisted or pulled.

- Remove the printer cover. Slide the print mechanism to the center of the roller. Then, take out the ribbon cartridge by pressing the notched latch and pulling cartridge up and out.
- 1 Press in the two latches located on either side of the print mechanism under the ribbon tray. (These latches are approximately midway from the roller to the rear of the tray)
 - 2 Tilt the print mechanism toward you. Pull daisy wheel, using the center hub, up and off. If the print mechanism detaches from the hinge, it can be easily reattached.
 - 3 Firmly place the new daisy wheel on the spindle, making sure the square hole in the daisy wheel lines up with its post. Push the print mechanism firmly back down.
 - 4 Replace the ribbon cartridge. Make sure the ribbon feeds around the right spring, between the daisy wheel and roller, and around the left spring. Take up any slack in the ribbon by turning the ribbon advance knob clockwise. Replace the printer cover.



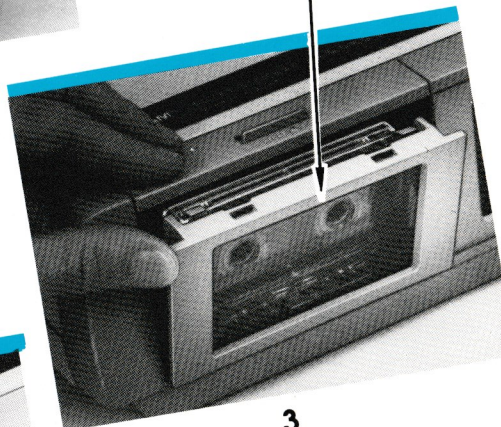
HELPFUL TIP: It is common practice to save important files twice—on separate digital data packs. We strongly recommend this practice so that you will never lose valuable files.

2 SMALL
UPPER HOLES



2

PUSH CENTER TOP OF
DRIVE DOOR TO CLOSE



3

DIGITAL DATA
DRIVE HEAD



4

6

Digital Data Pack

Inserting and Removing Digital Data Packs

Digital data packs are specially designed for your computer. Although they may look like audio cassette tapes, digital data packs are very different. Do not attempt to use audio cassette tapes in place of digital data packs.

To insert or remove a digital data pack, follow these steps.

- 1 Make sure the drive is not moving—the spindles of the drive should be stationary.
To open the drive door, push back the tape release bar (on top of the door).
- 2 When inserting digital data pack be sure that the two small holes in the upper right and left corners of the digital data pack face the back.
- 3 Close the drive door by pushing on the center top of the drive door. If the data pack is inserted incorrectly, the door will not close. The data pack must be securely in place or the data pack will not load or move correctly. If Adam™ does not read your digital data pack, open the drive door, carefully re-insert your digital data pack and try again.

IMPORTANT: DO NOT TURN THE POWER ON OR OFF, OR UNPLUG THE COMPUTER WHILE A DATA PACK IS IN THE DRIVE.

- Keep digital data packs away from magnetic fields, such as televisions, vacuum cleaners, refrigerators, power tools and other electrical appliances.
- Keep digital data packs off printer, memory console and TV.
- Store and use digital data packs away from extreme heat or cold.
- Store digital data packs in their plastic cases, away from dust, temperature extremes, and electrical currents.
- Never remove a moving digital data pack from its drive as damage may result to the data pack.

4 Cleaning Digital Data Drive

- The digital data drive head should be cleaned after approximately 40 hours of use, or if you are experiencing difficulty in reading information from data packs.

Moisten a foam tip applicator with a few drops of cleaning fluid. Gently rub the surface of the tape head to remove dust or grit. Wait a few minutes to allow the head to dry before inserting a digital data pack.

WARNING: Do not use regular swabs. These are special foam tip applicators produced in a purified environment.

7

TO ORDER ADDITIONAL ACCESSORY KITS OR INDIVIDUAL COMPONENTS

If Accessory Kits or Individual Components are not available at your local dealer, they can be obtained from Coleco Industries, Inc., 23 Chelton Avenue, West Hartford, Ct., 06110. Attn: Order Processing.

Fill out and send this form.


Please ship () ea. Adam Accessory Kit No. 7816	@	\$33.95	
Please ship () ea. Blank Digital Data Pack No. 2564	@	5.95	
Please ship () ea. Adam Ribbon Cartridge No. 7806	@	5.95	
Please ship () ea. Daisy Wheel—Emphasis No. 7822	@	5.95	
Please ship () ea. Daisy Wheel—Courier 72 No. 7820	@	5.95	
Please ship () ea. Daisy Wheel—Pica 40 No. 7821	@	5.95	
Please ship () ea. Digital Data Drive Cleaner Kit No. 7829 (20 Foam Tip Applicators and Cleaning Fluid)	@	4.95	
Merchandise Total			
Appropriate State Tax Ct., Ma., N.Y., C.A., IL Only			
Shipping and Handling		2.00	
Total			

SEND COMPLETE FORM WITH CHECK OR MONEY ORDER ONLY. (DO NOT MAIL CASH OR COINS) MAKE PAYABLE TO COLECO INDUSTRIES.

NO C.O.D. ORDERS WILL BE ACCEPTED.

PRICES AND PARTS AVAILABILITY SUBJECT TO CHANGE WITHOUT PRIOR NOTICE. PLEASE ALLOW 3 TO 4 WEEKS FOR DELIVERY. OUT OF STOCK ITEMS MAY BE BACK ORDERED WHERE NECESSARY.

—SHIPPING LABEL—PRINT CLEARLY IN INK—DO NOT REMOVE—

	COLECO IND., INC., 23 CHELTON AVE. WEST HARTFORD, CT. 06110 ATTN: ORDER PROCESSING
TO	
NAME	
ADDRESS	
CITY STATE	
ZIP CODE	
POSTMASTER:	
CONTENTS MERCHANDISE—RETURN POSTAGE GUARANTEED. MAY BE OPENED FOR POSTAL INSPECTION IF NECESSARY.	

ColecoVision® is a registered trademark of Coleco Industries, Inc.
ADAM™ is a trademark of Coleco Industries, Inc. © 1983 Coleco Industries, Inc. All rights reserved. Printed in U.S.A.

CUT ALONG DOTTED LINE. FILL OUT BOTH SECTIONS AND MAIL